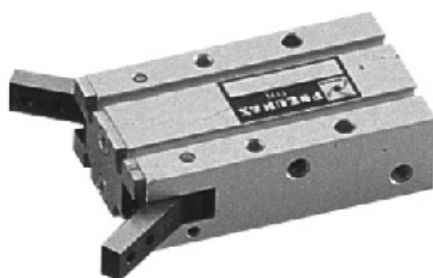


Pos.	Item	Qty.	Pos.	Item	Qty.
1	Fingers	2	10	Cushioning	1
2	Closing plate	1	11	Magnet	1
3	Bearing	2	12	Piston seal	1
4	Pin	2	13	Sliding block	1
5	Thrust lever	1	14	End cover	1
6	Thrust pin	2	15	Circlip	1
7	Rod seal	1	16	End cover seal	1
8	Body	1	17	Piston	1
9	Rod	1			



Ordering code

6302.Ø.D

- 10
- 16
- 20
- 25

Magnetic sensors : see page 3.39

Construction characteristics

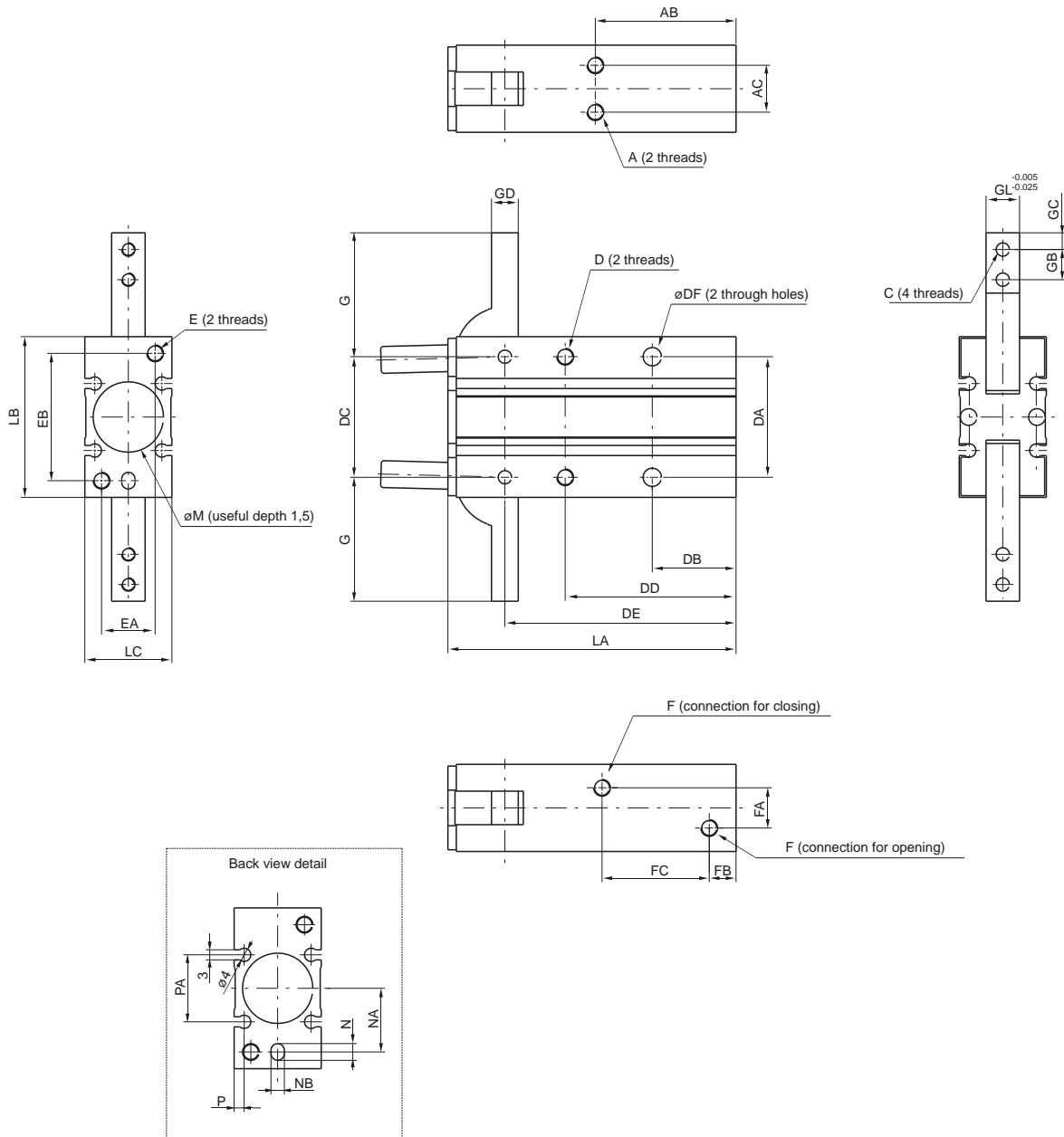
Body	aluminium
Piston	aluminium
Fingers	steel
End cover	aluminium

Technical characteristics

Fluid	filtered and non lubricated air
Function	double acting
Working pressure	1 ÷ 6 bar
Working temperature	-5°C ÷ +70°C

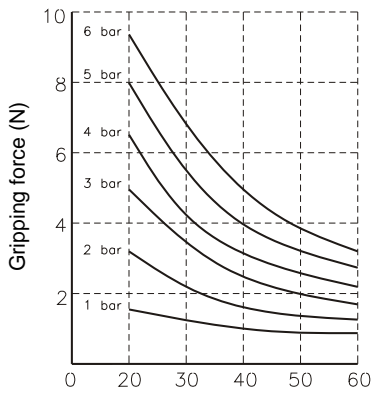
Holding force (Nm) at 5 bar

Bore	Holding force	Opening total Stroke
10	0,16	-3° ÷ 180°
16	0,54	
20	1,1	
25	2.28	



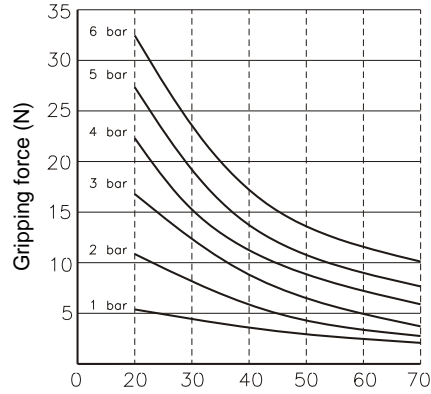
Bore	A	AB	AC	C	D	DA	DB	DC	DD	DE	DF	E	EA	EB
10	M3x0,5 (useful ul d ept h 4)	30	9	M3x0,5	M3x0,5 (useful ul d ept h 6)	24	18	22	35	47,5	3,4	M3x0,5 (useful ul d ept h 6)	9	24
16	M4x0,7 (useful ul d ept h 5)	33	12	M3x0,5	M4x0,7 (useful ul d ept h 8)	30	20	28	41	55,5	4,5	M4x0,7 (useful ul d ept h 8)	12	30
20	M5x0,8 (useful ul d ept h 8)	42	14	M4x0,7	M5x0,8 (useful ul d ept h 10)	36	25	36	51	69	5,5	M5x0,8 (useful ul d ept h 10)	16	38
25	M6x1 (useful ul d ept h 10)	50	16	M5x0,8	M6x1 (useful ul d ept h 12)	42	30	45	60	86	6,6	M6x1 (useful ul d ept h 12)	18	46

Bore	F	FA	FB	FC	G	GB	GC	GD	GL	LA	LB	LC	N	NA	ϕM (H9)	ϕNB (H9)	P	PA	Weight (gr.)
10	M5x0,8	3	7	23	23,5	6	3	4	6	58	30	15	4	9	11	3 (useful ul d ept h 3)	2	13	70
16	M5x0,8	8	7	25	28,5	7	4	5	8	69	38	20	4	15	17	3 (useful ul d ept h 3)	2,5	18	150
20	M5x0,8	2	8	32	37	9	5	8	10	86	48	26	5	19	21	4 (useful ul d ept h 4)	3	20	320
25	M5x0,8	14	8	42	45	12	6	10	12	107	58	30	5	23	26	4 (useful ul d ept h 4)	3	24	550



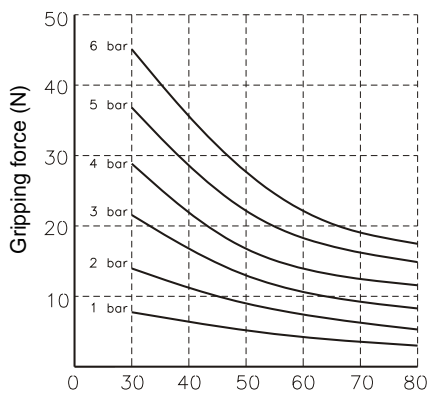
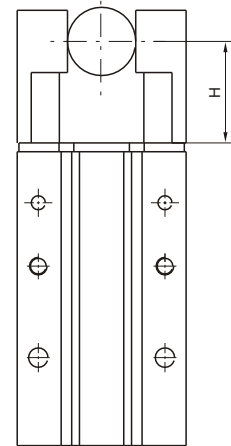
Ø10

Distance H (mm)



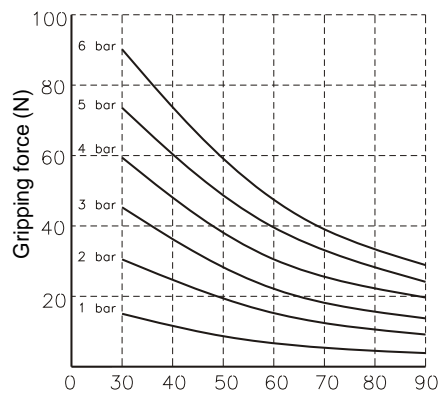
Ø16

Distance H (mm)



Ø20

Distance H (mm)



Ø25

Distance H (mm)

