

Construction and working characteristics

- 3 way valve with double poppet.
- Possibility to adjust the down stream circuit filling time by the enclosed adjustable metering screw.
- Quick down stream circuit discharge.
- Possibility for a pneumatic or electric piloting control.
- Body made with anodized 2011 aluminum alloy.
- Wall mounting possibility with M8 screws.

Important note: the preventive or programmed maintenance of this product is not foreseen considering the elaborated assembling and the specific "PNEUMAX" testing; therefore, call the producer or its representative in case of necessity.

Technical characteristics

Connections	G 1"
Max. inlet pressure	10 bar - 1 MPa
Max ambient temperature	50°C
Weight	gr. 2300
Assembly position	Any
Wall mounting screws	M8
Nominal flow at 6 bar with Dp=1	8000 NI/min
Flow with adjustable metering screw fully open	3000 NI/min

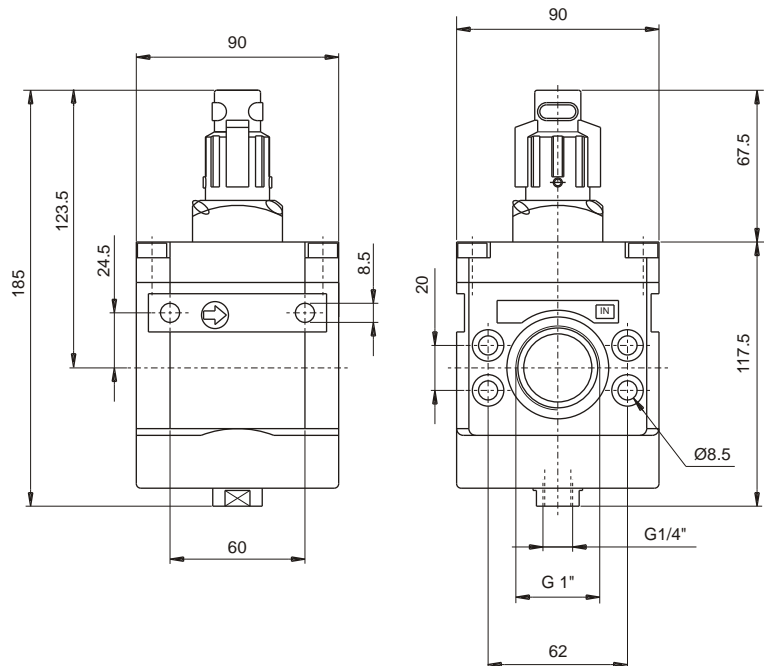
Ordering code

17410.M2

Electrically controlled progressive start-up valve size 4, complete with mechanic for M2 microsolenoid valve.

17420

Progressive start-up valve size 4 with pneumatic control.



Construction and working characteristics

- 3 ways poppet valve.
- Body made with light alloy.
- Wall mounting possibility with M8 screws protected by covers.
- Double action handle for valve opening: pushing and rotating (clockwise).
- Simple rotate the valve handle counter clockwise for valve closing and down stream circuit discharging.
- Possibility to lock the valve in the discharging position by fitting in a padlock in the proper seat.

Important note: the preventive or programmed maintenance of this product is not foreseen considering the elaborated assembling and the specific "PNEUMAX" testing; therefore, call the producer or its representative in case of necessity.

Technical characteristics

Connections	G 1"
Max. inlet pressure	13 bar - 1,3 MPa
Max. ambient temperature	50°C
Weight	gr. 1600
Assembly position	Any
Nominal flow at 6 bar with DP=1	8000 NI/min
Wall mounting screws	M8
Handle opening and closing angle	90°
Max. fitting torque	40 Nm

Ordering code

17430 .

A = Not lockable handle
B = Lockable handle

Example: **17430.B**
Shut-off valve size 4 complete with lockable handle.